



# Red Thread Run 2008

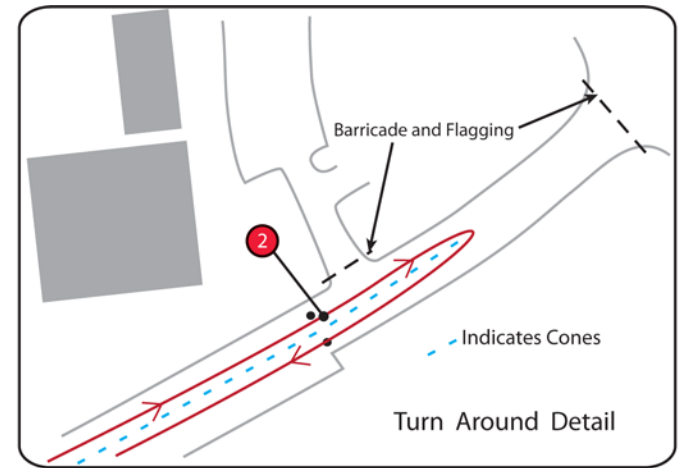
Denver, Colorado  
USA T&F Certificate # CO08009DP  
Expires December 31, 2018

Start/Finish: Center of manhole cover 90° E of LP 35/57 (pole is on S side of road. Marked on S edge of road.)  
1 Mile: 33' N of N manhole cover in middle of road.  
2 Mile: Eastbound, 2' E of 8" water covers in street, 11' W of sidewalk/curb junction.  
Turnaround: 34' E of LP 56/26  
3 Mile: 28 yards W of LP 29/45. Also 7' E of manhole cover which is north of Steele St.



*RaceMeasure* has measured this course following USA T&F guidelines, and stands by the certification.

However, *RaceMeasure* does not set out the course on race-day, and is not responsible for courses not set out precisely according to this map.

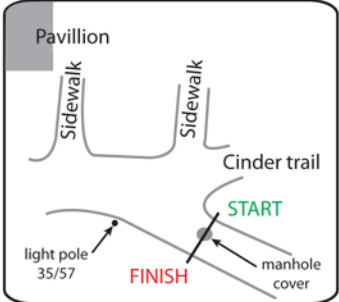


Turn Around Detail



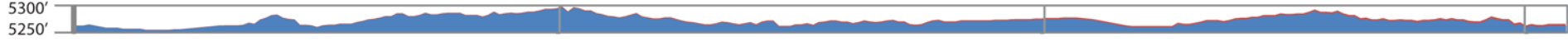
GPS coordinates, NAD 83:

Start/Finish:	N39.74516 W104.95169
1 Mile:	N39.74501 W104.95850
2 Mile:	N39.74877 W104.94553
Turnaround:	N39.74897 W104.94512
3 Mile:	N39.74432 W104.95008



Start / Finish Detail

Course is to-scale, but street widths are not.  
Not all cross-streets are shown.



This is basically a flat course. Most elevation variations are from GPS noise. There is only a 50' difference between high and low points.  
Measurement, map, and elevation profile by RaceMeasure, March 2008. [www.RaceMeasure.com](http://www.RaceMeasure.com)